

KENWOOD

About "KENWOOD Music Editor"

- This unit supports the PC application "KENWOOD Music Editor Light ver1.0" or later.
- When you use the audio file with database information added by the "KENWOOD Music Editor Light ver1.0," you can search a file by title, album or artist name using Music Search.
- In the Instruction manual, the term "USB device" is used to mean the device that contains audio files with database information added with KENWOOD Music Editor.
- "KENWOOD Music Editor Light ver1.0" is available from the following web site:
www.kenwood.com/cs/ce/
- For further information on "KENWOOD Music Editor Light ver1.0," refer to the site above or the application help.

About Audio file

- Playable Audio file:
KDC-U449/ KDC-U3049/ KDC-U349: MP3 (.mp3), WMA (.wma)
KDC-4051UM: AAC-LC (.m4a), MP3 (.mp3), WMA (.wma)
- Playable disc media: CD-R/RW/ROM
- Playable disc file format: ISO 9660 Level 1/2, Joliet, Romeo, Long file name.
- Playable USB device file system: FAT16, FAT32

Although the audio files are complied with the standards listed above, the play maybe impossible depending on the types or conditions of media or device.



Declaration of Conformity with regard to the EMC Directive 2004/108/EC Manufacturer:

Kenwood Corporation
2967-3 Ishikawa-machi, Hachioji-shi, Tokyo, 192-8525 Japan

EU Representative's:

Kenwood Electronics Europe BV
Amsterdamseweg 37, 1422 AC UITHOORN, The Netherlands

For Turkey

Bu ürün 26891 sayılı Resmi Gazete'de yayımlanan Elektrikli ve Elektronik Eşyalarda Bazı Zararlı Maddelerin Kullanımının Sınırlanırılması Dair Yönetmeliğe uygun olarak üretilmiştir.

This product complies with Directive, Number 26891 regarding "REGULATION ON THE RESTRICTION OF THE USE OF CERTAIN HAZARDOUS SUBSTANCES IN ELECTRICAL AND ELECTRONIC EQUIPMENT".

- "Made for iPod," and "Made for iPhone" mean that an electronic accessory has been designed to connect specifically to iPod, or iPhone, respectively, and has been certified by the developer to meet Apple performance standards. Apple is not responsible for the operation of this device or its compliance with safety and regulatory standards. Please note that the use of this accessory with iPod or iPhone may affect wireless performance.
- iPhone, iPod, iPod classic, iPod nano, and iPod touch are trademarks of Apple Inc., registered in the U.S. and other countries.

The "AAC" logo is a trademark of Dolby Laboratories.



This symbol mark indicates that Kenwood manufactured this product so as to decrease harmful influence on the environment.

KDC-U449 KDC-U3049 KDC-U349 KDC-4051UM

CD-RECEIVER
INSTRUCTION MANUAL

Kenwood Corporation



CONTENTS

| | |
|-------------------------------------------------------------------|-----------|
| Safety | 2 |
| Preparation | 3 |
| How to attach/detach the faceplate | |
| How to reset your unit | |
| How to prepare the remote controller (RC-405) | |
| Basic operations | 4 |
| Getting started | 6 |
| Canceling the display demonstration | |
| Setting the demonstration mode | |
| Adjusting the clock | |
| Initial settings before operations | |
| Listening to the radio | 7 |
| Changing the frequency steps (KDC-U449/ KDC-U3049/ KDC-U349 only) | |
| Adjust [SETTINGS] mode settings | |
| Listening to the other external components | 9 |
| Listening to a disc/ USB device/ iPod | 10 |
| Start playing a disc | |
| Direct Music Search using the remote controller (RC-405) | |
| Connecting a USB device | |
| Connecting an iPod (KDC-U449 only) | |
| Selecting Repeat Play | |
| Selecting Random Play | |
| Selecting Scan Play | |
| Selecting a folder/track/file | |
| Functions of KDC-U449 with iPod | |
| Alphabet Search and My Playlist for iPod | |
| iPod control by Hand Mode | |
| Adjust [SETTINGS] mode settings | |
| Function settings | 13 |
| Troubleshooting | 15 |
| Installation/connection | 16 |
| Basic procedure | |
| Warning | |
| Caution | |
| Wiring connection | |
| Installing the unit | |
| Removing the unit | |
| Specifications | 19 |

Safety

WARNING

Stop the car before operating the unit.

Important to know...

- To prevent a short circuit, never put or leave any metallic objects (such as coins or metal tools) inside the unit.

- **Caution:** Adjust the volume so that you can hear sounds outside the car. Driving with the volume too high may cause an accident.

- **Condensation:** When the car is air-conditioned, moisture may collect on the laser lens. This may cause disc read errors. In this case, remove the disc and wait for the moisture to evaporate.

- This unit can only play the CDs with:



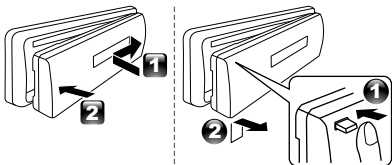
- The illustrations in this manual are examples used to explain more clearly how the controls are used. Therefore, what appears on the illustrations may differ from what appears on the actual equipment.
- A USB connection cable, CA-U1EX (optional accessory) is required for connecting a USB device.
- You can connect an Apple iPod/iPhone with KDC-U449.

The word "iPod" appearing in this manual indicates the iPod or iPhone connected to this unit with a connection cable, KCA-iP101 (optional accessory).

- If you experience problems during installation, consult your Kenwood dealer.
- When you purchase external components, check with your Kenwood dealer to make sure that they work with your model and in your area.
- Detailed information and notes about the playable audio files are stated in an online manual on the following site:
www.kenwood.com/cs/ce/audiofile/

Preparation

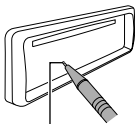
How to attach/detach the faceplate



- Do not expose the faceplate to direct sunlight, excessive heat, or humidity. Also avoid places with too much dust or the possibility of water splashing.
- Keep the faceplate in its casing while detached.
- The faceplate is a precision piece of equipment and can be damaged by shocks or jolts.
- To prevent deterioration, do not touch the terminals of the unit and faceplate with your fingers.

How to reset your unit

If this unit fails to operate properly, press the reset button.



Reset button

The unit returns to factory settings when the reset button is pressed.

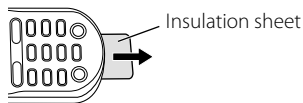
The marking of products using lasers



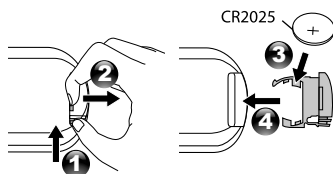
The label is attached to the chassis/case and says that the component uses laser beams that have been classified as Class 1. It means that the unit is utilizing laser beams that are of a weaker class. There is no danger of hazardous radiation outside the unit.

How to prepare the remote controller (RC-405)

When you use the remote controller for the first time, pull out the insulation sheet.



If the effectiveness of the remote controller decreases, replace the battery.



Caution:

- Do not set the remote control in hot places such as on the dashboard.
- Lithium battery.
Danger of explosion if the battery is incorrectly replaced. Replace only with the same or equivalent type.
- The battery pack or batteries shall not be exposed to excessive heat such as sunshine, fire or the like.
- Keep battery out of reach of children and in original package until ready to use. Dispose of used batteries promptly. If swallowed contact physician immediately.

Remote controller (RC-405) is equipped for KDC-U449/ KDC-U3049/ KDC-U349.

- KDC-4051UM can also be remotely controlled with an optionally purchased remote controller.

Basic operations

Display window

KDC-U449:



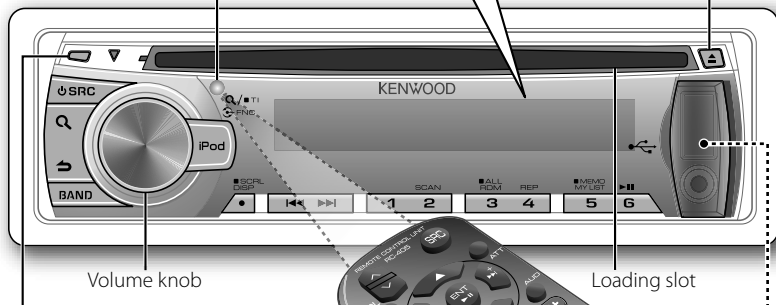
KDC-U3049/ KDC-U349/ KDC-4051UM:



Remote sensor

■ Do not expose to bright sunlight.

Ejects the disc



Volume knob

Loading slot

Detaches the faceplate

The following indicator lights up when...

ST : A stereo broadcast is received.

IN : A disc is in the unit.

KDC-U449 only:

ATT (blink) : The sound attenuates.

EQ : [SYSTEM Q] is set to an EQ mode other than [NATURAL]. (page 13)

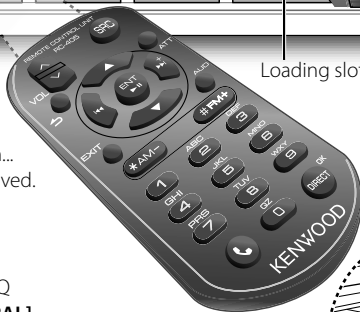
B.BOOST : [BASS BOOST] is set to [1] or [2]. (page 13)

Q : In Search Mode or when a Playlist is displayed.

KDC-4051UM only:

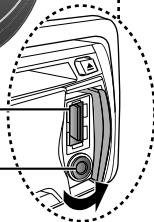
TI : Traffic Information function is turned on.

RDS : Radio Data System service is available.



USB terminal

Auxiliary input jack



Muting upon the reception of a phone call

To use this feature, connect the MUTE lead to your telephone using a commercial telephone accessory. (page 17)

When a call comes in, "CALL" appears.

■ The audio system pauses.

■ To continue listen to the audio system during a call, press **φ SRC**. "CALL" disappear and the audio system resumes.

When a call ends, "CALL" disappear.

■ The audio system resumes.

When you press or hold the following button(s)...

| Main unit | Remote controller | General operation |
|-----------------------------------------|-----------------------------------------|-----------------------------------------------------------------------------------------------------------------------------------------------------------------------------------------------------------------------------------------------------------------------------------|
| SRC | — | <ul style="list-style-type: none"> Turns on. Turns off if pressed and held. |
| | SRC | Selects the available sources (TUNER, USB or iPod, CD, AUX, STANDBY), if the power is turned on. <ul style="list-style-type: none"> If the source is ready, playback also starts. "iPod" or "CD" is selectable only when an iPod is connected or a disc is loaded. |
| Volume knob (turn) | VOL \diamond | Adjusts the volume level. |
| | \blacktriangle / \blacktriangledown | Selects items. |
| Volume knob (press) | ENT \blacktriangleright \parallel | Confirms selection. |
| | — | Enters [FUNCTION] settings. |
| BAND | *AM- / #FM+ | <ul style="list-style-type: none"> Selects the FM bands (FM1/ FM2/ FM3), MW/ SW1/ SW2, or MW/ LW. Selects the next/previous folder. (Pressing BAND on the main unit can only select the next folders.) |
| 6 (\blacktriangleright \parallel) | ENT \blacktriangleright \parallel | Pauses/resumes playback of a disc/ USB device/ iPod. |
| \lll / \ggg | \lll / \ggg + | <ul style="list-style-type: none"> Searches for a radio station. Selects track/file. Fast-forwards/reverses tracks if pressed and held. (Fast-forwards/reverses cannot be performed using the remote controller.) |
| | — | <ul style="list-style-type: none"> Changes the display information. Scrolls the display information if pressed and held. Enters clock adjustment mode directly (page 6) if pressed and held while in clock display screen. |
| SCRL DISP | — | <ul style="list-style-type: none"> Changes the display information. Scrolls the display information if pressed and held. Enters clock adjustment mode directly (page 6) if pressed and held while in clock display screen. |
| iPod | — | KDC-U449 only: <ul style="list-style-type: none"> Selects "iPod" source. Switches the controlling terminal (HANDS ON/ HANDS OFF) for iPod playback if pressed and held. (page 12) |
| \times | — | KDC-U3049/ KDC-U349/ KDC4051URM/ KDC-4051UGM only: Selects Random Play. (page 11) |
| — | AUD | Enters [AUDIO CONTROL/ AUDIO CTRL] settings directly. |
| — | ATT | Attenuates the sound. <ul style="list-style-type: none"> To return to the previous level, press the button again. |
| \curvearrowright | \curvearrowright | Returns to the previous item. |
| | EXIT | Exit from setting mode. <ul style="list-style-type: none"> Press and hold \curvearrowright on the main unit will also exit from the setting mode. |

The illustration and button names used for explanation in this manual are of KDC-U449 (unless mentioned otherwise). Refer to the table below for the difference:

| KDC-U449: | iPod | 3 (ALL RDM) | 5 (MEMO MY LIST) |
|----------------------------------|----------|-------------|------------------|
| KDC-U3049/ KDC-U349/ KDC-4051UM: | \times | 3 | 5 |

Getting started

Canceling the display demonstration

The display demonstration is always turned on unless you cancel it.

When you turn on the power (or after you reset the unit), the display shows:

[CANCEL DEMO] → [PRESS] → [VOLUME KNOB]

- 1 Press the volume knob.
[YES] is selected as the initial setup.
- 2 Press the volume knob again to confirm.
[DEMO OFF] appears.
 - If no operation is done for about 15 seconds or if you turn the volume knob to select [NO] in step 2, [DEMO MODE] appears and the display demonstration starts.

Setting the demonstration mode

- 1 Press the volume knob to enter [FUNCTION].
- 2 Turn the volume knob to select [DEMO MODE], then press to enter.
- 3 Turn the volume knob to select [ON] or [OFF].
If [ON] is selected, display demonstration starts if no operation is done for about 20 seconds.
- 4 Hold **↶** to finish the procedure.

Maintenance

Cleaning the unit: Wipe off the dirt on the panel with a dry silicon or soft cloth. Failure to observe this precaution may result in damage to the monitor or unit.

Cleaning the connector: Wipe off dirt on the connector of the unit and faceplate. Use a cotton swab or cloth.

Handling discs

- Do not touch the recording surface of the disc.

Adjusting the clock

- 1 Press the volume knob to enter [FUNCTION] mode.
- 2 Turn the volume knob to select [SETTINGS], then press to enter.
- 3 Turn the volume knob to select [CLOCK], then press to enter.
- 4 Turn the volume knob to select [CLOCK ADJUST/ CLOCK ADJ], then press to enter.
Clock hour flashes on the display.
- 5 Turn the volume knob to adjust the hour, then press to enter the minute adjustment.
Clock minutes flashes on the display.
- 6 Turn the volume knob to adjust the minute, then press to confirm.
Press **◀◀/▶▶** to move between the hour and minute adjustment.
- 7 Hold **↶** to finish the procedure.

Initial settings before operations

- 1 Press **⏻ SRC** to enter [STANDBY] mode.
- 2 Press the volume knob to enter [FUNCTION] mode.
- 3 Turn the volume knob to select [INITIAL SET], then press to enter.
- 4 Turn the volume knob to make a selection, then press to confirm.
See table on page 7 for selection.
- 5 Hold **↶** to finish the procedure.

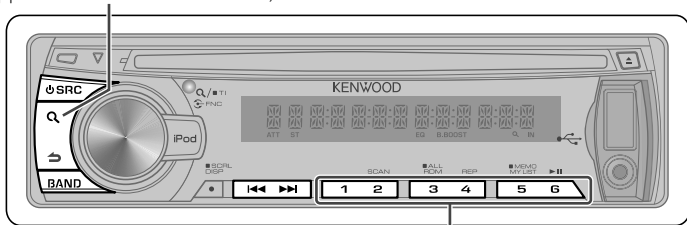
- Do not stick tape etc. on the disc, or use a disc with tape stuck on it.
- Do not use any accessories for the disc.
- Clean from the center of the disc and move outward.
- Clean the disc with a dry silicon or soft cloth. Do not use any solvents.
- When removing discs from this unit, pull them out horizontally.
- Remove the rims from the center hole and disc edge before inserting a disc.

| Item | Selectable setting (Preset: *) |
|------------------------------|--------------------------------------------------------------------------------------------------------------------------------------------------------------------------------------------------------------------------------------------------------------------------------------------------------------------------------------------------------------------------------------------------------------------------------------------------------------------------------|
| PRESET TYPE | NORMAL/ NORM* : Memorizes one station for each preset button in each band (FM1/ FM2/ FM3/ MW/ LW/ SW1/ SW2).; MIX : Memorizes one station for each preset button regardless of the selected band (FM1/ FM2/ FM3/ MW/ LW/ SW1/ SW2). |
| KEY BEEP | ON*/ OFF : Activates/deactivates the keypress tone. |
| TDF ALARM | ON : Activates the alarm if you forgot to detach the faceplate when ACC is set to OFF. ; OFF* : Cancels |
| RUSSIAN SET | ON : Folder name, file name, song title, artist name, album name are displayed in Russian (if applicable). ; OFF* : Cancels. |
| P-OFF WAIT | Sets the duration when the unit will automatically turns off (while in standby mode) to save the battery. -----: Cancels; 20M* : 20 minutes; 40M : 40 minutes; 60M : 60 minutes |
| BUILT-IN AUX/ BUILTIN AUX | ON1* : Outputs sound of the connected external component through the car speakers when "AUX" is selected as the source. ; ON2 : Outputs sound from the connected external component when "AUX" is selected as the source. When you turn on the power, the sound attenuates (to prevent noise when no external component is connected). Turn the volume knob clockwise to return to the previous volume level. ; OFF : Disables "AUX" in source selection. |
| CD READ | 1* : Automatically distinguishes between audio file disc and music CD. ; 2 : Forces to play as a music CD. No sound can be heard if an audio file disc is played. |
| SWITCH PREOUT/ SWITCH PRE | REAR*/ SUB-W : Selects whether rear speakers or a subwoofer are connected to the line out terminals on the rear of the unit (through an external amplifier). |
| SP SELECT | OFF*/ 5/4/ 6 × 9/6/ OEM : Selects the speaker size for optimum performance. |
| F/W UP xx.xx | YES : Starts upgrading the firmware. ; NO* : Cancels (upgrading is not activated). For details on how to update the firmware, see: www.kenwood.com/cs/ce/ |

- [TDF ALARM] is selectable only with KDC-U449/ KDC-U3049/ KDC-U349.
- [RUSSIAN SET/ P-OFF WAIT] is selectable only with KDC-4051UM.

Listening to the radio

KDC-4051UM: Hold to turn on or off the Traffic Information function (not applicable if "MW/ LW" is selected).



Hold for about 2 seconds to memorize the current station (or the selected Program Type for KDC-4051UM). (Refer to [PTY SEARCH] on page 8 to select the Program Type.)

- Press briefly to recall memorized station (or Program Type after entering the PTY search mode for KDC-4051UM).

- 1 Press **SRC** to select "TUNER."
- 2 Press **BAND** repeatedly to select a band (FM1/ FM2/ FM3/ MW/ LW/ SW1/ SW2).
- 3 Press **◀▶** to search for a station.

Continued...

Changing the frequency steps (KDC-U449/ KDC-U3049/ KDC-U349 only)

You can change the frequency step of FM/ MW:

FM : 50 kHz to 200 kHz

MW : 9 kHz to 10 kHz

- 1 Press and hold **⏻ SRC** to turn off the power.
- 2 While pressing number buttons **1** and **5 (MEMO MY LIST)**, press **⏻ SRC**.

Release your fingers from the buttons after the display appears.

- To restore the initial setting, repeat the same procedure.
- When the frequency step is changed, the frequencies in the memory are deleted.

Adjust [SETTINGS] mode settings

While listening to the radio...

- 1 Press the volume knob to enter **[FUNCTION]** mode.
- 2 Turn the volume knob to select **[SETTINGS]**, then press to enter.
- 3 Turn the volume knob to make a selection, then press to confirm.
See table below for selection.
- 4 Hold **↵** to finish the procedure.

| Item | Selectable setting (Preset: *) |
|-------------|-----------------------------------------------------------------------------------------------------------------------------------------------------------------------------------------------------------------------------------------------------------------------------------|
| LOCAL SEEK | ON : Searches only stations with good reception (KDC-U449/ KDC-U3049/ KDC-U349: MW/ SW1/ SW2 stations only; KDC-4051UM: FM stations only). ; OFF *: Cancels. |
| SEEK MODE | Selects the tuning mode for ◀◀ / ▶▶ buttons. AUTO1 *: Automatically search for a station. ; AUTO2 : Search in the order of the stations in the preset memory. ; MANUAL : Manually search for a station. |
| AUTO MEMORY | YES : Automatically starts memorizing 6 stations with good reception. ; NO *: Cancels (automatic memorizing is not activated). (Selectable only if [NORMAL/ NORM] is selected for [PRESET TYPE] .) (page 7) |
| MONO SET | ON : Improves the FM reception (but the stereo effect may be lost). ; OFF *: Cancels (stereo effect resumes). |
| PTY SEARCH | Selects the available Program Type (page 9). Then, press ◀◀ / ▶▶ to start searching. Press the volume knob to enter PTY language selection. Turn the volume knob to select the PTY language (ENGLISH* / FRENCH / GERMAN), then press to confirm. |
| NEWS SET | 00M – 90M : Sets the time for receiving the next news bulletin. ; OFF *: Cancels. |
| AF SET | ON *: Automatically searches for another station broadcasting the same program in the same Radio Data System network with better reception when the current reception is poor. ; OFF : Cancels. |
| RDS REG | ON *: Switches to another station only in the specific region using the "AF" control. ; OFF : Cancels. |
| ATP SEEK | ON *: Automatically searches for a station with better reception when the traffic information's reception is poor. ; OFF : Cancels. |

- **[PTY SEARCH/ NEWS SET/ AF SET/ RDS REGIONAL/ RDS REG/ AUTO TP SEEK/ ATP SEEK]** is selectable only for KDC-4051UM.
- **[PTY SEARCH]** is selectable only when the source is "FM."
- **[NEWS SET/ AF SET/ RDS REGIONAL/ RDS REG/ ATP SEEK]** is selectable only when the source is "FM." If other playback source is selected, these settings are selectable under **[RDS SET]** item. (page 14)

For KDC-4051UM:**■ Available Program Type:**

| | | | | | | |
|-----------------|----------------|-----------------|---------|---------------|----------------|------------------|
| SPEECH | MUSIC | NEWS | AFFAIRS | INFO | SPORT | EDUCATE |
| DRAMA | CULTURE | SCIENCE | VARIED | POP M (music) | ROCK M (music) | EASY M (music) |
| LIGHT M (music) | CLASSICS | OTHER M (music) | WEATHER | FINANCE | CHILDREN | SOCIAL |
| RELIGION | PHONE IN | TRAVEL | LEISURE | JAZZ | COUNTRY | NATION M (music) |
| OLDIES | FOLK M (music) | DOCUMENT | | | | |

The unit will search for the Program type categorized under [SPEECH] or [MUSIC] if selected.
[SPEECH] : White character item. ; [MUSIC] : Black character item.

- The Radio Data System feature won't work where the service is not supported by any broadcasting station.
- If the volume is adjusted during reception of traffic information, the adjusted volume is memorized automatically. It will be applied the next time Traffic Information function is turned on.

Using the remote controller (RC-405)

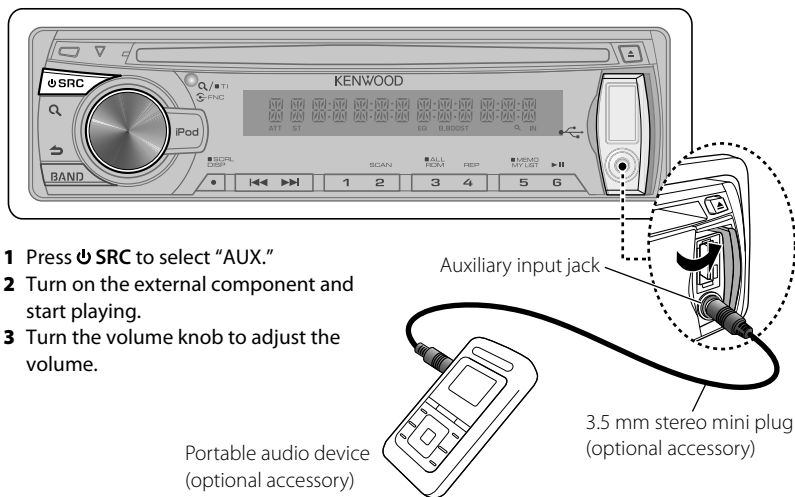
FM+ / AM- : Selects band.

◀◀ / ▶▶ (+) : Selects station.

1 - 6 : Selects preset station.

Listening to the other external components

Preparation : Make sure [ON1] or [ON2] is selected for [BUILT-IN AUX/ BUILTIN AUX].
(page 7)



- 1 Press **SRC** to select "AUX."
- 2 Turn on the external component and start playing.
- 3 Turn the volume knob to adjust the volume.

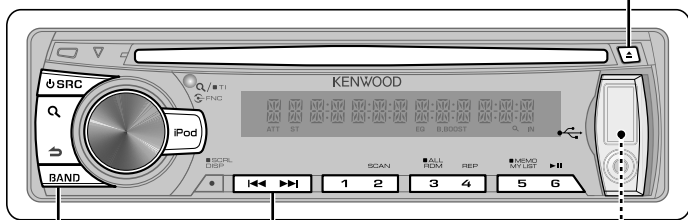
Portable audio device
(optional accessory)

Auxiliary input jack

3.5 mm stereo mini plug
(optional accessory)

Listening to a disc/ USB device/ iPod

Ejects the disc. ("NO DISC" appears and "IN" indicator goes off.)



- Press to select track/file.
- Hold to fast-forwards/reverses.

Press to select next folder.

Start playing a disc

- 1 Press **SRC** to turn on the power.
- 2 Insert a disc into the loading slot. Playback starts automatically.
- 3 Press number button **6 (▶||)** to resume/pause playback (if necessary).

Direct Music Search using the remote controller (RC-405)

• Not available if Random Play, Scan Play, or iPod playback is selected.

- 1 Press **DIRECT** to enter Direct Music Search Mode. " _ _ _ " appears.
 - 2 Press the number buttons to enter the track number.
 - 3 Press **◀◀ / ▶▶** to search for the music.
- To cancel the Direct Music Search Mode, press **↶** or **EXIT**.

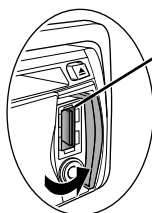
Using the remote controller (RC-405)

In playback mode:

- FM+ / AM-** : Selects folder.
- ◀◀ / ▶▶ (+)** : Selects track/file.
- ENT ▶||** : Pauses/resumes playback.

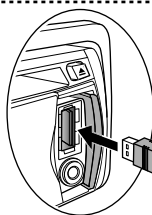
In Music Search Mode:

- ENT ▶||** : Confirms selection.
- ▲ / ▼** : Selects folders/files.
- ↶** : Returns to the previous folder.



USB terminal

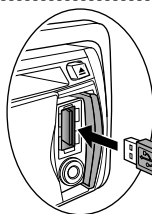
Slide open the cover.



Connecting a USB device

CA-U1EX
(optional accessory)

USB device (optional accessory)



Connecting an iPod (KDC-U449 only)

Apple iPod
(optional accessory)

KCA-iP101
(optional accessory)

The source automatically switches, and playback starts.

Selecting Repeat Play


Press number button **4 (REP)** repeatedly to make a selection.

Audio CD : TRACK/ TRAC (track) REPEAT,
REPEAT OFF


AAC (KDC-4051UM only)/MP3/WMA :
FILE REPEAT, FOLD (folder) REPEAT,
REPEAT OFF

iPod : FILE REPEAT, REPEAT OFF

Selecting Random Play

Press number button **3 (ALL RDM)** or  repeatedly to make a selection.

Audio CD : DISC RANDOM, RANDOM OFF
AAC (KDC-4051UM only)/MP3/WMA/iPod :
FOLDER/ FOLD (folder) RANDOM,
RANDOM OFF

- Press and hold number button **3 (ALL RDM)** or  to select "ALL RANDOM."
 - Applicable only if "RANDOM OFF" is selected initially.
 - KDC-U449 only: Changes the iPod browsing item to "songs."

Selecting Scan Play


Press number button **2 (SCAN)** repeatedly to make a selection.





Audio CD : TRACK/ TRAC (track) SCAN,
SCAN OFF

AAC (KDC-4051UM only)/MP3/WMA :
FILE SCAN, SCAN OFF

- If scan play is selected, the unit starts playing the first 10-second intro of the music in the disc/current folder.
If "SCAN OFF" is selected, the unit resumes normal play of the current song.

Selecting a folder/track/file

- 1 Press  to enter Music Search mode. "SEARCH" appears, then the current file name appears on the display.
- 2 Turn the volume knob to select a folder/track/file, then press to confirm.

- To return to the root folder (or first track for audio CD), press **BAND**.
- To return to the previous folder, press .
- To cancel the Music Search mode, press and hold .
- < or > on the display indicates that preceded/next item is available.
- For USB device* and iPod: To skip search, press  / .

* This operation is effective only for the files registered in the database created with Kenwood Music Editor. (Refer to rear cover of this manual.)

- KDC-U449 only: To return to the top menu while in the search mode of an iPod, press **BAND**.

Discs that cannot be used

- Discs that are not round.
- Discs with coloring on the recording surface or discs that are dirty.
- You cannot play a Recordable/ReWritable disc that has not been finalized. (For the finalization process refer to your disc writing software, and your disc recorder instruction manual.)
- 3-inch CD cannot be used. Attempt to insert using an adapter can cause malfunction.

About USB device

- This unit can play AAC (KDC-4051UM only)/MP3/WMA files stored on a USB mass storage class device.
- Install the USB device in the place where it will not prevent you from driving your vehicle properly.
- You cannot connect a USB device via a USB hub and Multi Card Reader.
- Make sure all important data has been backed up to avoid losing the data.
- Connecting a cable whose total length is longer than 5 m can result in abnormal playback.

Alphabet Search and My Playlist for iPod

Selecting a song by alphabet

- 1 Press **Q** to enter Music Search mode. "SEARCH" appears.
- 2 Turn the volume knob to select a category, then press to confirm.
- 3 Press **Q** again to enter alphabet search mode. "SEARCH < _ _ _>" appears.
- 4 Turn the volume knob to select the character to be searched for.
- 5 Press **◀◀ / ▶▶** to move to the entry position.
You can enter up to three characters.
- 6 Press the volume knob to start searching.
 - To cancel the Alphabet Search mode, press and hold **↶**.
 - A longer searching time is required if there are many songs or playlists in the iPod.
 - To search for a character other than A to Z and 0 to 9, enter only "*".
 - The article (a, an, the) of songs name will be skipped during search.

Registering songs in the playlist

- 1 Select and play the song you want to register. (page 11)
- 2 Press and hold number button **5 (MEMO MY LIST)** to register. "## STORED" (registration number) appears.
You can register up to 10 songs. "MEMORY FULL" appears, if you try to register the eleventh song.
 - If you attempt to register a song from a different iPod, "NO INFO" followed by "MPLIST DELETE" appears.
To delete the playlist, turn the volume knob to select "YES," then press to confirm.
 - You can also register the song displayed in the Music Search mode by following the same procedure.
 - Do not register Podcasts.

Playing a song on the playlist

- 1 Press number button **5 (MEMO MY LIST)** to display the playlist. "MY PLAYLIST" appears.
- 2 Turn the volume knob to select the song you want, then press to confirm.
 - Random play cannot be performed during playback of a song in the playlist.

Deleting a song on the playlist

- 1 Press number button **5 (MEMO MY LIST)** to display the playlist. "MY PLAYLIST" appears.
- 2 Turn the volume knob to select the song you want to delete, then press and hold the volume knob.
- 3 Turn the volume knob to select "DELETE ONE" or "DELETE ALL," then press to confirm.
Select "DELETE ALL" to delete all the songs in the playlist.
- 4 Turn the volume knob to select "YES," then press to confirm. "COMPLETE" appears.

iPod control by Hand Mode

Press and hold iPod to enter iPod mode.

HANDS ON :

Control iPod from the iPod. "iPod MODE" appears on the display.

HANDS OFF: Control iPod from the unit.

Adjust [SETTINGS] mode settings

While listening to an iPod...

- 1 Press the volume knob to enter [FUNCTION] mode.
- 2 Turn the volume knob to select [SETTINGS], then press to enter.
- 3 Turn the volume knob to make a selection, then press to confirm.
See table on page 13 for selection.
- 4 Hold **↶** to finish the procedure.

Functions of KDC-U449 with iPod

| Item | Selectable setting (Preset: *) |
|-----------------|----------------------------------------------------------------------------------------------------------------------------------------------------------------------------------|
| SKIP SEARCH | 0.5%*/ 1%/ 5%/ 10%: Sets the ratio of skip when searching for a song in Music Search mode. (Holding ◀◀ / ▶▶ skips songs at 10% regardless of the setting made.) |
| PLAYLIST DELETE | YES: Deletes the saved My Playlist. ; NO*: Cancels. |

About compatible iPod/iPhone

Made for

- iPod touch (1st, 2nd, and 3rd generation)
- iPod classic
- iPod with video
- iPod nano (1st, 2nd, 3rd, 4th, and 5th generation)
- iPhone 4
- iPhone 3GS
- iPhone 3G
- iPhone

- For the latest compatible list and software version of iPod/iPhone, see:
www.kenwood.com/cs/ce/ipod
- If you start playback after connecting the iPod, the music that has been played by the iPod is played first.
In this case, "RESUMING" is displayed without displaying a folder name, etc. Changing the browse item will display a correct title, etc.
- You cannot operate iPod if "KENWOOD" or "✓" displayed on iPod.

Function settings

- 1 Press the volume knob to enter [FUNCTION] mode.
- 2 Turn the volume knob to select [AUDIO CONTROL/ AUDIO CTRL] or [SETTINGS], then press to enter.
- 3 Turn the volume knob to make a selection, then press to confirm.
 - See table below for selection.
 - Repeat step 3 until the desired item is selected/activated.
 - Press **↶** to return to the previous item.
- 4 Hold **↶** to finish the procedure.

[AUDIO CONTROL/ AUDIO CTRL] : While listening to any source except in STANDBY state...

| Item | Selectable setting (Preset: *) |
|-------------|----------------------------------------------------------------------------------------------------------------------------------------------------------------------------------------------------------------------------------------------------------------------------------|
| SUB-W LEVEL | -15 — +15 (Preset: 0): Adjusts the subwoofer output level. |
| BASS BOOST | B.BOOST LV1*/ B.BOOST LV2: Selects your preferred bass boost level. ; OFF: Cancels. |
| SYSTEM Q | NATURAL*/ USER/ ROCK/ POPS/ EASY/ TOP40/ JAZZ/ GAME: Selects a preset sound mode suitable to the music genre. (Selects [USER] to use the customized bass, middle, and treble settings.) |
| BASS ADJUST | BASS CTR FRQ/ BASS C FRQ: 60/ 80/ 100*/ 200: Selects the center frequency. BASS LEVEL: -8 — +8 (Preset: 0): Adjusts the level. BASS Q FACTOR/ BASS Q FCTR: 1.00*/ 1.25/ 1.50/ 2.00: Adjusts the Q factor. BASS EXTEND: ON: Turns on the extended bass. ; OFF*: Cancels. |

Continued...

| Item | Selectable setting (Preset: *) |
|-----------------------------|------------------------------------------------------------------------------------------------------------------------------------------------------------------------------------------------------------------------------------------------------------------------------------------------------------|
| MID ADJUST | MID CTR FRQ/ MID C FRQ: 0.5K/ 1.0K*/ 1.5K/ 2.5K: Selects the center frequency. |
| | MID LEVEL: -8 — +8 (Preset: 0): Adjusts the level. |
| | MID Q FACTOR/ MID Q FCTR: 0.75/ 1.00*/ 1.25: Adjusts the Q factor. |
| TRE ADJUST | TRE CTR FRQ/ TRE C FRQ: 10.0K/ 12.5K*/ 15.0K/ 17.5K: Selects the center frequency. |
| | TRE LEVEL: -8 — +8 (Preset: 0): Adjusts the level. |
| BALANCE | L15 — R15 (Preset: 0): Adjusts the left and right speaker output balance. |
| FADER | R15 — F15 (Preset: 0): Adjusts the rear and front speaker output balance. |
| SUBWOOFER SET/ SUB-W SET | ON*: Turns on the subwoofer output. ; OFF: Cancels. |
| DETAILED SET/ DETAIL SET | LPF SUBWOOFER/ LPF SUB-W: THROUGH*: All signals are sent to the subwoofer. ; 85HZ/ 120HZ/ 160HZ: Frequencies higher than 85 Hz/ 120 Hz/ 160 Hz are cut off. |
| | SUB-W PHASE: REVERSE/ REV (180°)/ NORMAL/ NORM (0°)*: Selects the phase angle of the subwoofer output to be in line with the speaker output for optimum performance. (Selectable only if a setting other than [THROUGH] is selected for [LPF SUBWOOFER/ LPF SUB-W].) |
| | SUPREME SET: ON*: Creates realistic sound by interpolating the high-frequency components that are lost in AAC/MP3/WMA audio compression. ; OFF: Cancels. (Selectable only when playback an AAC/MP3/WMA file or a USB device, except iPod.) |
| | VOLUME OFFSET/ VOL OFFSET: (Preset: 0) -8 — +8 (for AUX) ; -8 — 0 (for other sources): Presets the volume adjustment level of each source. The volume level will automatically increase or decrease when you change the source. (Before making an adjustment, select the source you want to adjust.) |

- [SUB-W LEVEL/ SUBWOOFER SET/ SUB-W SET/ LPF SUBWOOFER/ LPF SUB-W/ SUB-W PHASE] is selectable only if [SWITCH PREOUT/ SWITCH PRE] is set to [SUB-W]. (page 7)
- [SUB-W LEVEL/ LPF SUBWOOFER/ LPF SUB-W/ SUB-W PHASE] is selectable only if [SUBWOOFER SET/ SUB-W SET] is set to [ON].
- Select a source before making a source tone memory adjustment, [BASS ADJUST/ MID ADJUST/ TRE ADJUST].

[SETTINGS]

| Item | Selectable setting (Preset: *) |
|---------------------------|---------------------------------------------------------------------------------------------------------------------------------------------------------------------------------------|
| AUX NAME SET/ AUX NAME | AUX*/ DVD/ PORTABLE/ GAME/ VIDEO/ TV: Selects the desired name for the connected component. (Selectable only if "AUX" is selected as the source.) |
| CLOCK | CLOCK ADJUST/ CLOCK ADJ: (For details, see page 6.) |
| | TIME SYNC: ON*: Synchronizes the Radio Data System station time data and the unit's clock. ; OFF: Cancels. |
| DISPLAY | DIMMER SET: ON: Dims the display illumination. ; OFF*: Cancels. |
| | TEXT SCROLL: AUTO/ ONCE: Selects to scroll the display information automatically, or scroll only once. ; OFF: Cancels. (Preset: KDC-U449/KDC-U3049/ KDC-U349: AUTO ; KDC-4051UM: OFF) |
| RDS SET | NEWS SET/ AF SET/ RDS REG/ ATP SEEK: Selectable if any source other than tuner source is selected. (For details, see page 8.) |

[TIME SYNC/ RDS SET] is selectable only with KDC-4051UM.

Troubleshooting

| Symptom | Remedy/Cause |
|------------------------------------------------------------------------------------------------------------------------------|--------------------------------------------------------------------------------------------------------------------------------------------------------------------------------------------|
| Sound cannot be heard. | Adjust the volume to the optimum level. / Check the cords and connections. |
| "PROTECT" appears and no operations can be done. | Check to be sure the terminals of the speaker leads are covered with insulating tape properly, then reset the unit. If "PROTECT" does not disappear, consult your nearest service center. |
| The unit does not work at all. | Reset the unit. |
| [P-OFF WAIT] does not work. | Exit from the demonstration mode. (page 6) |
| Radio reception is poor. / Static noise while listening to the radio. | Connect the antenna firmly. / Pull the antenna out all the way. |
| "IN" flashes. | The CD player is not operating properly. Reinsert the disc properly. If the condition did not improve, turn off the unit and consult your nearest service center. |
| CD-R/CD-RW cannot be played back and tracks cannot be skipped. | Insert a finalized CD-R/CD-RW (finalize with the component which you used for recording). |
| Disc sound is sometimes interrupted. | Stop playback while driving on rough roads. / Change the disc. / Check the cords and connections. |
| "NA FILE" appears. | The unit is playing an unsupported audio file. |
| "NO DISC" appears. | Insert a playable disc into the loading slot. |
| "TOC ERROR" appears. | The CD is quite dirty. / The CD is upside-down. / The CD is scratched a lot. Try another disc instead. |
| "ERROR 99" appears. | The unit is malfunctioning for some reason. Press the reset button on the unit. If the "ERROR 99" code does not disappear, consult your nearest service center. |
| "COPY PRO" appears. | A copy-protected file is played. |
| "READ ERROR" appears. | Copy the files and folders for the USB device again. If the error message is still displayed, initialize the USB device or use other USB devices. |
| "NO DEVICE" appears. | No USB device is connected. Connect an USB device, and change the source to USB again. |
| "NO MUSIC" appears. | The connected USB device contains no playable audio file. |
| "NA DEVICE" appears. | Connect a supported USB device, and check the connections. |
| "USB ERROR" appears. | Remove the USB device, turn the unit off, then turn it on again. If the unit still showing the same display, try to connect another USB device. |
| "iPod ERROR" appears. | Reconnect the iPod. / Confirm that the software for the iPod is the latest version. |
| Noise is generated. | Skip to another track or change the disc. |
| Tracks cannot play back as you have intended them to play. | Playback order is determined when files are recorded. |
| "READING" keeps flashing. | Longer readout time is required. Do not use too many hierarchies and folders. |
| Elapsed playing time is not correct. | This is caused by how the tracks are recorded. |
| The number of songs contained in "SONGS" category of this unit is different from that contained in "SONGS" category of iPod. | Podcast files are not counted in this unit as this unit does not support the playback of podcast files. |
| Correct characters are not displayed (e.g. album name). | This unit can only display letters (upper case), numbers, and a limited number of symbols. Cyrillic alphabets (upper case) can also be displayed if [RUSSIAN SET] is set to [ON]. (page 7) |

Installation/connection

Part list:

- Ⓐ Faceplate..... (x1)
 - Ⓑ Escutcheon..... (x1)
 - Ⓒ Mounting sleeve..... (x1)
 - Ⓓ Casing for faceplate (x1)
 - Ⓔ Wiring harness..... (x1)
 - Ⓕ Removal tool..... (x2)
- KDC-U449/ KDC-U3049/ KDC-U349 only:**
- Ⓖ Flat head screw (for Nissan cars)..... (x4)
 - Ⓗ Round head screw (for Toyota cars).... (x4)

Basic procedure

- 1 Remove the key from the ignition switch, then disconnect the ⊖ terminal of the car battery.
- 2 Make proper input and output wire connections.
 - ➔ “Wiring connection” (page 17)
- 3 Install the unit to your car.
 - ➔ “Installing the unit” (page 18)
- 4 Reconnect the ⊖ terminal of the car battery.
- 5 Reset the unit. (page 3)

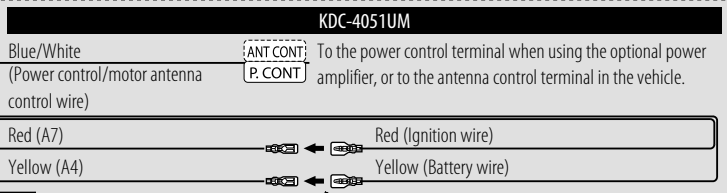
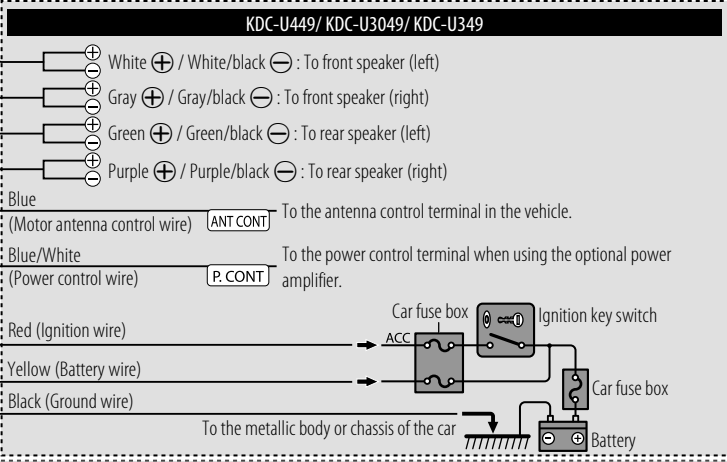
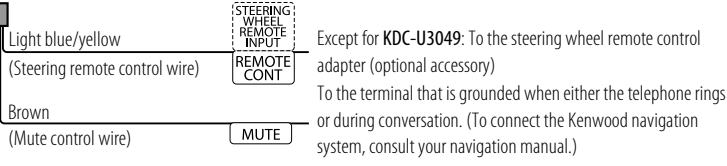
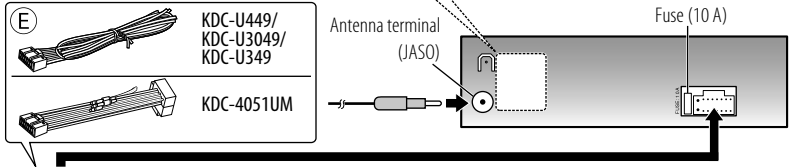
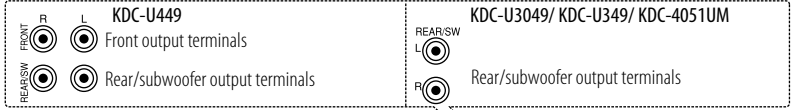
Warning

- The unit can only be installed in a car with a 12 V DC power supply, negative ground.
- If you connect the ignition wire (red) and the battery wire (yellow) to the car chassis (ground), you may cause a short circuit, that in turn may start a fire. Always connect those wires to the power source running through the fuse box.
- Disconnect the battery's negative terminal and make all electrical connections before installing the unit.
- Insulate unconnected wires with vinyl tape or other similar material. If no connections are made, do not let the wire come out from the tab to prevent short circuit.
- Be sure to ground this unit to the car's chassis again after installation.

Caution

- If your car's ignition does not have an ACC position, connect the ignition wires to a power source that can be turned on and off with the ignition key. If you connect the ignition wire to a power source with a constant voltage supply, as with battery wires, the battery may die.
- Do not use your own screws. Use only the screws provided.
- Install this unit in the console of your vehicle. Make sure the faceplate will not hit the lid of the console (if any) when closing and opening.
- After the unit is installed, check whether the brake lamps, blinkers, wipers, etc. on the car are working properly.
- Mount the unit so that the mounting angle is 30° or less.
- If the fuse blows, first make sure the wires are not touching to cause a short circuit, then replace the old fuse with one that has the same rating.
- Connect the speaker wires correctly to the terminals to which they correspond. The unit may be damaged or fail to work if you share the ⊖ wires or ground them to any metal part in the car.
- When only two speakers are being connected to the system, connect the connectors either to both the front output terminals or to both the rear output terminals (do not mix front and rear).
- Do not touch the metal part of this unit during and shortly after the use of the unit. Metal part such as the heat sink and enclosure become hot.
- Mounting and wiring this product requires skills and experience. For safety's sake, leave this work to professionals. If you experience problems during installation, consult your Kenwood dealer.

Wiring connection



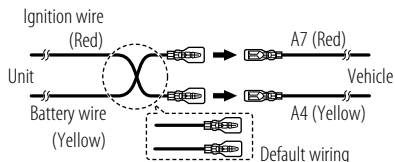
See also "Connecting the ISO connectors on some VW/Audi or Opel (Vauxhall) automobiles" on page 18.

ISO connectors

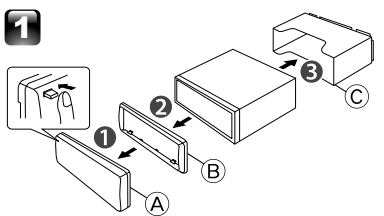
| Pin | Color and function | |
|---------|---------------------------|---------------------------|
| A4 | Yellow | Battery |
| A5 | Blue/White | Power control |
| A7 | Red | Ignition (ACC) |
| A8 | Black | Earth (ground) connection |
| B1 / B2 | Purple ⊕ / Purple/black ⊖ | Rear speaker (right) |
| B3 / B4 | Gray ⊕ / Gray/black ⊖ | Front speaker (right) |
| B5 / B6 | White ⊕ / White/black ⊖ | Front speaker (left) |
| B7 / B8 | Green ⊕ / Green/black ⊖ | Rear speaker (left) |

Connecting the ISO connectors on some VW/Audi or Opel (Vauxhall) automobiles

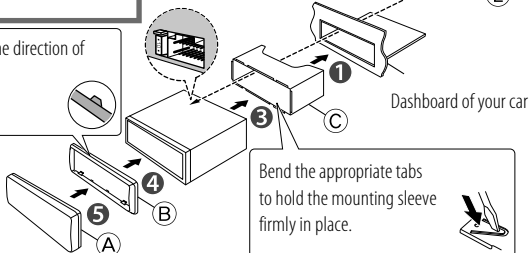
You may need to modify the wiring of the supplied wiring harness as illustrated below.



Installing the unit



2 Before attaching, make sure the direction of the escutcheon is correct. (Wider hooks on the top side.)



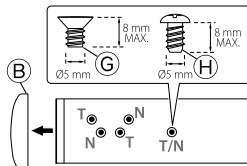
Connect the wiring harness to the unit. Other wiring connection has been completed earlier. (page 17)

Bend the appropriate tabs to hold the mounting sleeve firmly in place.

Installing without using the mounting sleeve (Japanese car)

(KDC-U449/ KDC-U3049/ KDC-U349 only)

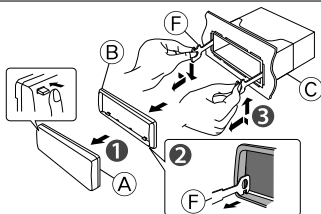
- 1 Remove the mounting sleeve and escutcheon from the unit.
- 2 Align the holes in the unit (on both sides) with the vehicle mounting bracket and secure the unit with the supplied screws.



T: Toyota cars
N: Nissan cars

Removing the unit

- 1 Detach the faceplate.
- 2 Engage the catch pin on the removal tools into the holes on both sides of the escutcheon, then pull it out.
- 3 Insert the removal tools deeply into the slots on each side, then follow the arrows instructions as on the right.



Specifications

Subject to change without notice.

KDC-U449/ KDC-U3049/ KDC-U349 only:

FM tuner section

Frequency range:

200 kHz space: 87.9 MHz — 107.9 MHz

50 kHz space: 87.5 MHz — 108.0 MHz

Usable sensitivity (S/N = 26 dB):

11.2 dBf (1.0 μ V/75 Ω)

Quieting sensitivity (DIN S/N = 46 dB):

19.2 dBf (2.5 μ V/75 Ω)

Frequency response (± 3 dB): 30 Hz — 15 kHz

Signal-to-Noise ratio (MONO): 63 dB

Stereo separation (1 kHz): 40 dB

AM tuner section

Frequency range:

Band 1 (MW):

10 kHz space: 530 kHz — 1 700 kHz

9 kHz space: 531 kHz — 1 611 kHz

Band 2 (SW1): 5 kHz space: 2 940 kHz — 7 735 kHz

Band 3 (SW2):

5 kHz space: 9 500 kHz — 10 135 kHz /

11 580 kHz — 18 135 kHz

Usable sensitivity (S/N = 20 dB):

MW: 31 dB μ (36 μ V) / SW: 32 dB μ (40 μ V)

KDC-4051UM only:

FM tuner section

Frequency range (50 kHz space): 87.5 MHz — 108.0 MHz

Usable sensitivity (S/N = 26 dB): 1.0 μ V/75 Ω

Quieting sensitivity (DIN S/N = 46 dB):

2.5 μ V/75 Ω

Frequency response (± 3 dB): 30 Hz — 15 kHz

Signal-to-Noise ratio (MONO): 63 dB

Stereo separation (1 kHz): 40 dB

MW tuner section

Frequency range (9 kHz space): 531 kHz — 1 611 kHz

Usable sensitivity (S/N = 20 dB): 36 μ V

LW tuner section

Frequency range: 153 kHz — 279 kHz

Usable sensitivity (S/N = 20 dB): 57 μ V

CD player section

Laser diode: GaAlAs

Digital filter (D/A): 8 Times Over Sampling

D/A converter: 24 Bit

Spindle speed: 500 rpm — 200 rpm (CLV)

Wow & Flutter: Below Measurable Limit

Frequency response (± 1 dB): 20 Hz — 20 kHz

Total harmonic distortion (1 kHz): 0.01 %

Signal-to-Noise ratio (1 kHz): 105 dB

Dynamic range: 90 dB

MP3 decode: Compliant with MPEG-1/2 Audio Layer-3

WMA decode: Compliant with Windows Media Audio

KDC-4051UM only:

AAC decode: AAC-LC “.m4a” files

USB interface

USB standard: USB1.1/ 2.0 (Full speed)

Maximum supply current: 500 mA

File system: FAT16/ 32

MP3 decode: Compliant with MPEG-1/2 Audio Layer-3

WMA decode: Compliant with Windows Media Audio

KDC-4051UM only:

AAC decode: AAC-LC “.m4a” files

Audio section

Maximum output power: 50 W \times 4

KDC-U449/ KDC-U3049/ KDC-U349 only:

Full bandwidth power (at less than 1 % THD):

22 W \times 4

KDC-4051UM only:

Output power (DIN 45324, +B = 14.4 V): 30 W \times 4

Speaker impedance: 4 Ω — 8 Ω

Tone action: Bass: 100 Hz \pm 8 dB

Middle: 1 kHz \pm 8 dB

Treble: 10 kHz \pm 8 dB

Preout level / load (CD): 2 000 mV/10 k Ω

Preout impedance: \leq 600 Ω

Auxiliary input section

Frequency response (± 3 dB): 20 Hz — 20 kHz

Input maximum voltage: 1 200 mV

Input impedance: 10 k Ω

General

Operating voltage (11 V — 16 V allowable): 14.4 V

Maximum current consumption: 10 A

Installation size (W \times H \times D):

182 mm \times 53 mm \times 158 mm

Weight: 1.3 kg